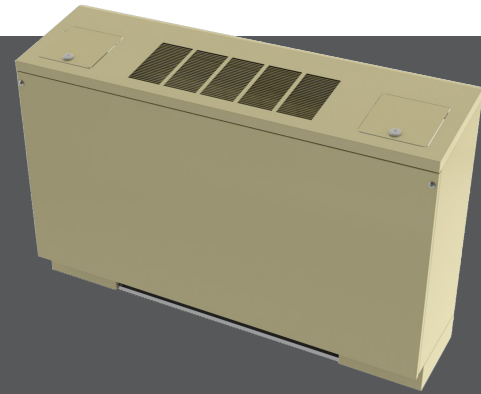


VBA

- Performance AHRI Certified to Standard 440
- ETL-Listed. Constructed in compliance with ANSI/UL 1995 Standard
- All internal sheet metal components are fabricated of 18GA G90 galvanized steel and exposed metal casing panels fabricated of 18GA galvanealed for superior adhesion of the powder paint
- Cabinet components are painted with a powder polyester baked coating in white or beige and are acoustically insulated to reduce noise dissipation from the unit
- Cabinet liner in ½" dual-density fiberglass
- High-efficiency 2-row coil suitable for a 2-pipe system
- Coil manual air vent
- Easily removal 1" thick disposable filter
- Multi-speed motor of the permanent split capacitor (PSC) type
- Double Width Double Inlet (DWDI) direct driven blowers of the whisper quiet type
- Controls installed in a single control box suitable for single power supply
- Single wall condensate pan in galvanized steel, thermally insulated on the outside*



VBA

- Single wall auxiliary condensate pan thermally insulated on the outside
- Angle stamped discharge top / grille
- Electric controls and valve package access doors



k-12 education



woodgrains



hospitals



hotels / motels



See website for Specifications

AVAILABLE MODEL:

VBA

OVERVIEW

Slim and attractively styled VBA fan coils are designed for exposed floor standing applications.

OPTIONAL FEATURES INCLUDE

- 3-, 4- And 5-row coils for 2-pipe systems
- Single block 2, 3 and 4 rows CW with 1 row re-heat or pre-heat coils for 4-pipe system applications (5 rows max)
- Single block 2 and 3 rows CW with 2 rows re-heat or pre-heat for 4-pipe system applications (5 rows max)
- Automatic coil air vents
- LH or RH pipe connections entry
- Filter option include:
 - » 1" high-efficiency pleated filters
 - » 1" washable filters
- Cabinet liner in ½" foil face
- Motor voltage suitable for 208V, 230V or 277V/1Ph/60Hz power supplies
- Motor in-line quick disconnect
- Thermostat and Accessories [Accessories on page V71]
- Single power supply disconnect switch and fuses
- Automatic 2-pipe changeover switch for heating and cooling applications
- Electric heaters
- HW standby electric heater auto changeover switch
- Fresh air opening
- Fresh air with manual or auto dampers
- Fresh air freeze protection

- Valve Packages [Accessories on page V71]
- Condensate pan options:
 - » Single wall condensate pan manufactured in 20GA 304 Stainless Steel
 - » Double wall construction consisting of outer and inner skins
 - » Condensate pan mastic coating applicable to the inside of the condensate pans for a prolonged life
 - » Single wall auxiliary condensate pan manufactured in 20GA 304 Stainless Steel
 - » Auxiliary condensate pan mastic coating applicable to the inside of the condensate pans for a prolonged life
 - » Auxiliary condensate pan overflow safety switch
- Discharge air grilles:
 - » Aluminum single deflection, left/right or front/back
 - » Deluxe aluminum single deflection grilles*
 - » Linear bar aluminum grilles*
 - » Special discharge air grille colors**
- Special cabinet paints**
- Heavy duty access panel in 16GA painted steel
- Return air/access panel fasteners:
 - » Philips head screws
 - » Tamper proof fasteners
 - » Quarter turn fasteners
 - » Access doors keyed locks



A Participating Corporation in the
AHRI 440 Certification Program